



The environmental and stylish choice
for fast hand drying and low
power consumption



Authorised User No. 00281



for a greener tomorrow





20 Years of innovation have created the best hand dryer yet

Perfecting the art of hand drying

Mitsubishi Electric are proud to introduce their 8th generation Jet Towel™ hand dryer. After 20 years of manufacture the Jet Towel is even faster, quieter, smaller and lower in energy consumption.

The Jet Towel hand dryer removes water from hands with two high speed wafer thin airflows that atomises the water, drying the hands in seconds. Mitsubishi's first Jet Towel was designed in 1992 and began production in 1993 and is now on it's 8th generation model. Since the earliest installations, it has proved a winner with installers for high tech elegance, with operators for low running cost and reliability, and with users for convenience, speed, and hygiene.

The Jet Towel's environmental credentials are high because it avoids the use of paper towels and it's power consumption is a fraction of alternative dryers. In use, just washed hands are placed into a slot on the Jet Towel's upper side and sensors automatically start the airflow.

Moisture is blown downwards on both sides of the hands to the drain, and when the dried hands are retracted airflow stops. This completely non-contact operation saves energy as the airflow does not continue after the user has departed and avoids any bacterial transfer. The materials of construction are anti-microbial, thus providing enhanced hygiene throughout Jet Towel's working life.

4 Options to meet your needs



Refined, ergonomic design available in three attractive colours - Select the unit that best matches your needs



Model
JT-SB216JSH -
Heated - White.
Model
JT-SB216KSN
Unheated -
White.



Model
JT-SB216JSH -
Heated - Silver.



Model
JT-SB216JSH -
Heated - Black

All heated models come with both a high speed and standard setting to choose from.

- High speed setting is 1240 watts when on and 720 watts with the heater off
- Standard setting is 1070 watts when on and 550 watts with the heater off

Other features include low noise from 58dB and drying times from 9 seconds.

The unheated model (JT-SB216KSN - White) also benefits from ultra low energy usage of 550watts.



Eco friendly

The high-speed Jet Towel™ hand dryer uses jet streams of air to dry hands, eliminating the paper waste associated with the use of paper towels, thus relieving you of the trouble of waste disposal as well.



Easy Maintenance

The only maintenance required is cleaning the air filter and removing water from the drain tank*, saving time by eliminating the daily replenishment of paper towels and replacing rolled-cloth towels.



Substantial Cost Reduction

Running from only 550 watts, costs are reduced to a fraction of the cost in comparison to hot air dryers, paper towels or rolled-cloth towels. The higher the use, the greater the savings and cost efficiency.



Improved Service

In addition to fast drying times - from only 9 seconds and low noise from 58dB, the Jet Towel offers a clean sanitary environment for customers. This results in enhanced customer service.

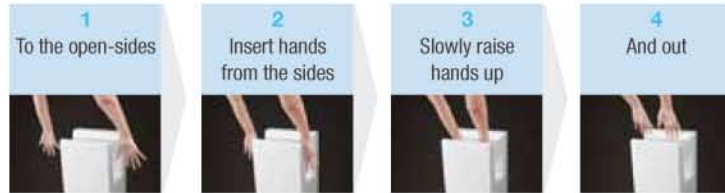
Simple to Use

**Jet Towel - overflowing with innovations
unique only to Mitsubishi Electric**



Open-side Design

The dryer is open on both sides, enabling easy hand access from the side without touching the unit. Inserting hands from the sides as shown in the photo, and slowly raising and lowering them a few times maximizes drying performance.



Hygienic

**Bacterial growth suppressed for all parts
susceptible to contact with water.**



Anti-microbial Treatment

All parts susceptible to coming into contact with water, such as the hand drying section, drain tank and water drainage duct (drain hose), are subjected to anti-microbial treatment to ensure highly sanitary conditions.

Alcohol-resistant Resin

An alcohol-resistant resin is used, enabling alcohol-based products to be used for cleaning the hand drying section, drain tank and water drainage duct where sanitary conditions are a matter of concern. The open-side design, which allows easy hand access from either side, ensures quick and thorough cleaning of the hand drying section as well.

Independent Air Ducts

In addition to an extremely hygienic touch-free design, emphasis has also been placed on ensuring the flow of fresh-air. The air-intake port and airflow route are isolated from the water drainage duct in Mitsubishi Electric products. Inserting the hands triggers a jet-stream of fresh air without using any air in the vicinity of the hands.

