

 **mitsubishi
ELECTRIC**
HAND DRYER

Changes for the Better

Mitsubishi
Electric
Quality

Jet Towel[®]

Hand-drying for the 21st century



ADA Compliant



www.o3solutions.com

Jet Towel a Mitsubishi Electric original

Hand-drying for the 21st century



Jet Towel®



o3 solutions Ltd

www.o3solutions.com

Technology for Comfort

World's first in hand-drying technology from Mitsubishi Electric

Dual Jet Drying

Drying speed is proportional to airflow and volume. For even faster drying, our proven Dual Jet engineering is now complemented with a streamlined nozzle design.

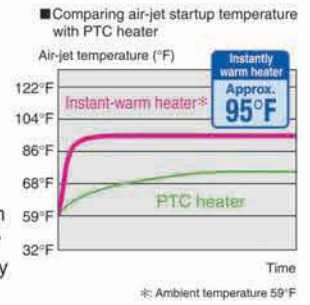
* Drying time according to Mitsubishi Electric's measurements.



Warm air—instantly (approx. 95°F)

Heat Storage for Instant Warm Air

The heater stores heat when the unit is not in use, blowing out warmth when operated. Inserting the hands instantly triggers a warm air-jet of approximately 95°F.



Stable operation for long service life

Brushless DC Motor

Equipped with a brushless DC motor Jet Towel is designed for seven years of service at 400 uses daily. No more problems with wear and tear on motor brushes paves the way for truly efficient power and stable operation for the long term.



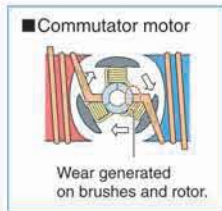
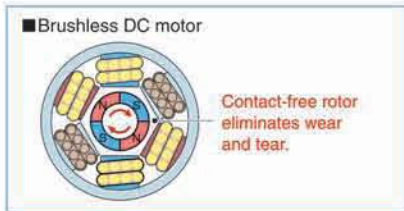
Superbly reliable startup and stop

Top and Bottom Sensors

A sensor located at the bottom of the unit detects fully inserted hands and initiates the airflow. A sensor located at the top of the unit can sense when hands are withdrawn, automatically stopping the airflow. Hands don't touch any part of the unit, making Jet Towel's touch-free design superbly hygienic.



Start detection sensor is installed at the bottom of the dryer.



Ergonomic Design

Easy hand access from the side

Open-side Design

The dryer is open on both sides, enabling easy hand access without touching the unit. With the hands in, slowly moving them up and down 2 to 3 times maximizes drying performance and prevents water drops from blowing back up.



Simple to use

Easy Position

The front insertion angle is a convenient 15°, allowing hands to be eased into the unit smoothly.

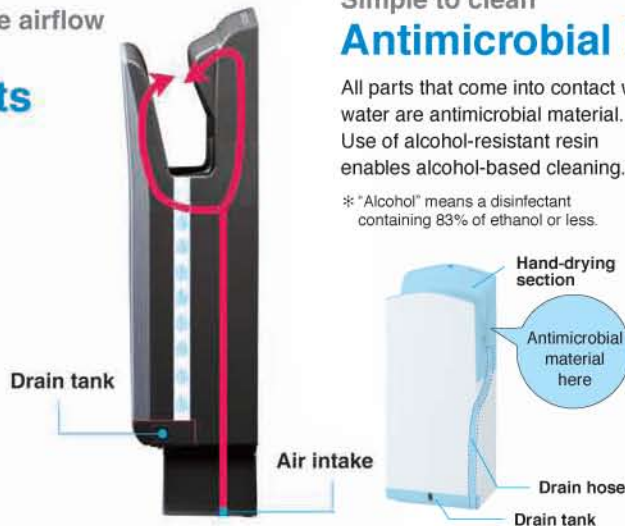


Stays Sparkling Clean

Advanced design ensures that the airflow is always fresh and dry

Independent Air Ducts

The air ducts are isolated from the water flow. Inserting the hands triggers a stream of fresh air from the air ducts, drying with maximum speed and comfort.



Simple to clean

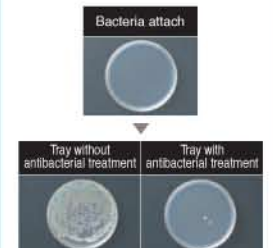
Antimicrobial Material

All parts that come into contact with water are antimicrobial material. Use of alcohol-resistant resin enables alcohol-based cleaning.*

* "Alcohol" means a disinfectant containing 83% of ethanol or less.

Comparative Proof of Antibacterial Effects

Following 24 hours of culturing with the film contact method in Mitsubishi Electric laboratories.



Silver ions contact the cell wall of general cellular bacteria, curbing protein synthesis and other actions to control bacteria growth and reproduction.

Advanced technology in an elegant, non-contact design - built for performance and comfort.



Heater Type

Model JT-SB216ESH (-W: White
-DG: Dark Grey)

Heater-less Type

Model JT-SB216GSN (-W: White
-DG: Dark Grey)

220-240V/50•60Hz



(see page 2 for details)

(see page 2 for details)

ESH (Heater type)

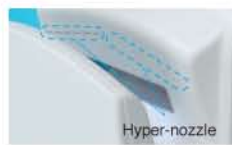
*1: Airflow rate is measured at the nozzle outlet. *2: "Alcohol" means a disinfectant containing 83% of ethanol or less.

New nozzle design combines rapid drying with low noise. This breakthrough means a high-speed hand drying time of 10~12 seconds.

Rapid Drying

Fitted with a newly developed hyper-nozzle

New arc-shaped hyper-nozzles ensure an even airflow over both sides of the hands for fast, efficient and effective drying. The fine-film air-jet blows water drops off the hands in an instant.



Because the air-jet hits specific points, some water drops cling to the hands (○ section).



Air-jet targets are expanded from individual points to cover a wider span, bridging gaps for complete and even drying performance.

Ergonomic Design

New design combines spatial compatibility and easy maintenance

An elegant fusion of sharp lines well-matched to sanitary space, and an easy-to-use rounded shape. The arch-shaped form is designed with rounded edges, reducing contact when inserting or withdrawing the hands.



Low Power Consumption (Heater-less type)

Realizing the industry's lowest power consumption

Power consumption is 560W, down 15% from the previous model. Rated current is 3.5A, while the ability to install two units with a 10A branch circuit improves installation efficiency (with JT-SB216GSN).



Quiet Operation

Designed for low noise

The new hyper-nozzle, installed with advanced jet-stream control technology developed by Mitsubishi Electric, resolves the problem of mutual interference noise between air currents. Noise is reduced considerably to only 59dB.

Equipped with power volume control

Customers can select the optimum operation mode, tailored to specific installation locations.

Mode	Air Speed (m/s)	Noise (dB)
High	Approx. 80	Approx. 59
Low	Approx. 50	Approx. 52

Long Life

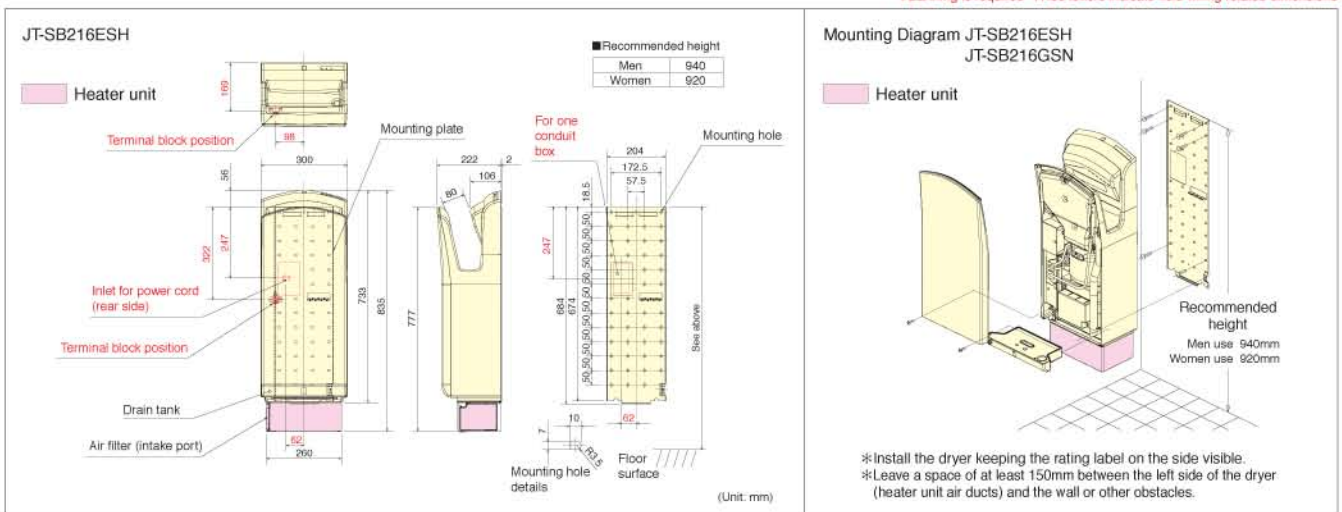
- The hand-drying area is made of alcohol-resistant resin, enabling cleaning using standard alcohol-based products.
- Antimicrobial treatment on areas that come into contact with water (hand-drying area, drain tank and drain hose).
- High-durability brushless DC motor (see page 2 for details).

Specifications

Drying method	Model name		Drying time (High)	Airflow rate (High)	External dimensions (mm) Width: 300 × Depth: 222 × Height: 835 (JT-SB216ESH) 733 (JT-SB216GSN)	Power supply 220-240V 50-60Hz	Rated current (A)		Power consumption (W)		Motor type	Safety components	Drain tank (L)	Weight (kg)
	Heater ON	Heater OFF					High	Low	High	Low				
Dual Jet Airflow	JT-SB216ESH	Heater ON	10~12 sec	80m/s			4.6-5	1010-1200	Brushless DC motor	Thermal fuse Overcurrent breaker	0.8	14		
		Heater OFF					4.0	650						
	JT-SB216GSN	—					3.5	560					130	12

*Drying times were obtained using Mitsubishi Electric's own measurement method. *Airflow rate is measured at the nozzle outlet.

*Earthing is required *Red letters indicate field wiring related dimensions



*Because there is no power cord, pull the 1.0mm²~2.5mm² cable out of the wall by 450mm. *Confirm points of caution about installation space with the dealer.

Options

Jet Towel has many options to choose from, so it can be customised to complement and enhance any setting.

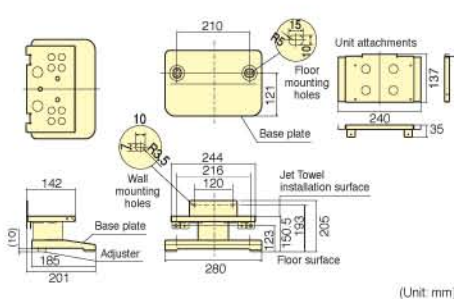
Jet Towel Stand

Heater type
JT-SB216ESH



JP-S15FS-H (Grey)

Dimensions JP-S15FS



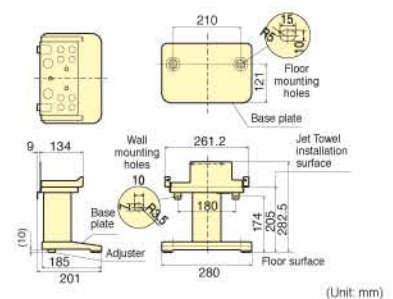
Jet Towel Stand

Heater-less type
JT-SB216GSN



JP-S21FS-H (Grey)

Dimensions JP-S21FS



Mitsubishi Electric Hand Dryer



Safety Precautions

- Always turn off the power switch and wear gloves before installing or cleaning the product.
- Read the instruction manual before using the product and follow the instructions carefully.
- Electrical wiring must be installed and connected properly in accordance with the local laws and regulations of each country.
- Do not connect the product to wiring used for other equipment, as this may result in overheating and/or fire in the wired area.
- Ensure the product is properly earthed and is protected by a circuit breaker and ground fault circuit interruptor (GFCI, GFI, ALCI, RCD or RCCB).
- Do not use in showers, baths, or other areas of high humidity, as this may lead to the unit short-circuiting or malfunctioning.
- Ensure that the main unit is securely attached to a sufficiently rigid structure. Detachment of the product from the mounting may lead to injury.
- The Jet Towel is designed for drying hands; use of the product for any other purpose may render the warranty null and void. This product cannot be used for sterilization.
- Do not use sprays or other products containing inflammable gas in the vicinity of the product.
- When using the Jet Towel Stand, securely fix the stand to a wall or floor surface to prevent the unit from tipping over (this is not necessary when the Jet Towel is already attached to a wall). In addition, always install the Jet Towel directly against a wall.

Installation Precautions

- When attaching the Jet Towel to a wall, select a height that is convenient for both men and women, where applicable.
- Do not install the Jet Towel in the following areas:
 - Areas in which the temperature may fall below 0°C
 - Areas in which the temperature may exceed 40°C
 - Extremely dusty areas
 - Areas prone to condensation
 - Areas directly exposed to water
 - Installation inside vehicles
 - Areas in direct sunlight or strong light
 - Salt damage region
 - Areas close to foodstuffs, cookware, etc.
 - Hot spring facility
 - Areas exposed to corrosive, neutral, or reducing gases

Precautions for Use

- Drying time (listed in the catalogue) will vary by individual user.
- Continuous operation in high-temperature environments (40°C) may cause overheating to be detected in electronic components, with an error indication appearing. This does not mean that the unit has malfunctioned, with the error sign automatically terminated when the temperature declines.
- Do not use the product to dry any chemicals or similar substances from the hands; failure to observe this precaution may shorten product life.
- Because the product is an electrical appliance, it should not be cleaned directly with pressurised water or by similar means.
- To clean the exterior of the main unit, remove any dust or grime using a damp cloth. If using a detergent, use only a neutral detergent diluted with water. Do not use paint thinner, alcohol, benzene, or acidic or alkaline cleaners.
- Water collected in the tank and drain receptacle at the bottom of the main unit must be emptied regularly to avoid overflow.
- Flush the drain mouth with approximately 200 cc of water at least once a week.
- Clean the air filter approximately once a week.
- Jet Towel service life is about 7 years, figured at 400 uses daily. Depending upon specific use conditions, this period may be shortened. Please contact Mitsubishi Electric if daily use broadly exceeds the designed level. In cases when the number of uses doubles the average frequency, for example, the unit's lifespan will be reduced to one-half.
- Water drawn into the main unit may be absorbed by the soundproofing material, resulting in bacterial build-up. To prevent this, ensure that water does not get in around the air filter and air intake.

*Safety considerations require that the serial number and/or appropriate markings or labeling be visible. When purchasing the product, make sure they are displayed on the main unit.

- Certain ratings and specifications may change due to product improvements or modifications.
- While every effort has been made to represent product colours herein accurately, slight deviations from actual colour may be noted due to the printing process.



Mitsubishi Electric Corporation's Nakatsugawa Works is an ISO certified plant, having obtained both ISO 9001 Quality Management System and ISO 14001 Environmental Management System certification.

www.o3solutions.com

o3 solutions ltd
centre house
79 chichester st
belfast
bt1 4je

www.o3solutions.com
mail@o3solutions.com

 **MITSUBISHI ELECTRIC CORPORATION**
Nakatsugawa Works, 1-3 Komaba-cho, Nakatsugawa-shi, Gifu, Japan 508-8666

